

# VariLoc

Solutions to Wrist Fractures

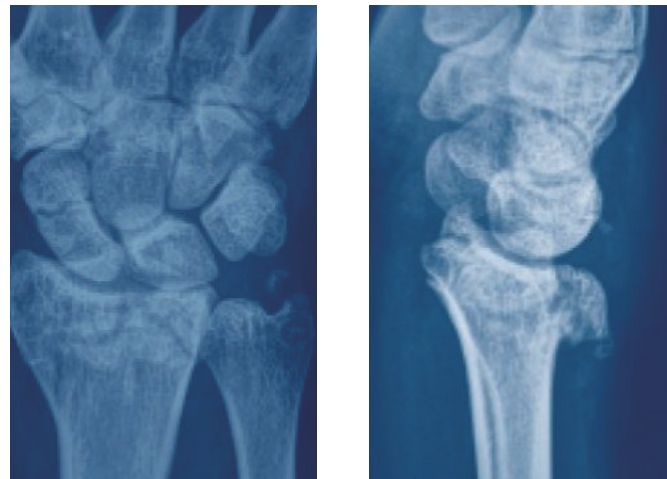


THERAPY OPTIMIZED  
**EXPECT EXTRAORDINARY**

# Wrist Locking Compression Plate System

## Indication

The 2.4/2.7mm Variable Angle Distal Radius Plates are intended for fixation of complex intra- and extra- articular fractures and osteotomies of the distal radius and other small bones.



These images do not represent product efficacy or final result and should be used as a pictorial representation only.

## Features & Benefits

- A broad range of plates are offered to address all kinds of distal radius fractures.



Distal Radius Volar Column  
Plate Locking Compression  
Plate II, 2.4/2.7



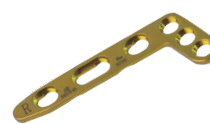
Distal Radius Two-Column  
Volar Plate II, 2.4/2.7



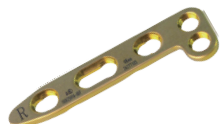
Distal Radius Volar Locking  
Compression Plate, oblique  
T, 2.4/2.7



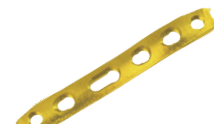
Distal Dorsal Radius T-Locking  
Compression Plate, 2.4/2.7



Distal Dorsal Radius Locking  
Compression Plate, oblique L,  
2.4/2.7



Distal Dorsal Radius Locking  
Compression Plate II, 2.4/2.7

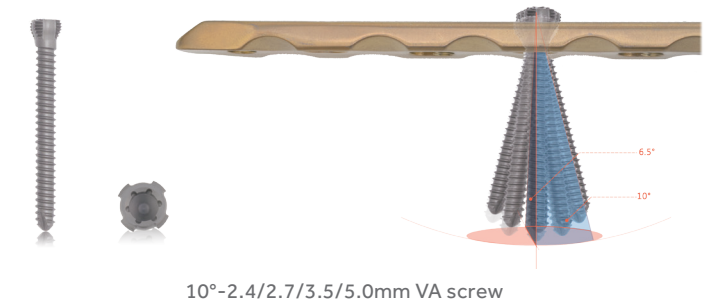


Distal Lateral Radius Locking  
Compression Plate, 2.4/2.7



Distal Lateral Ulna Locking  
Compression Plate, 2.4/2.7

- Unique variable angle locking screws allow up to 10° off-axis screw angulation in all directions in order to address the individual fracture patterns.



- VA screw drill sleeve to guide the VA locking screw direction.

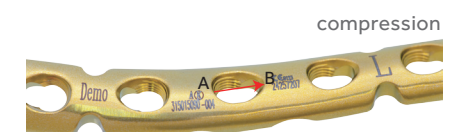


- Kirschner wire holes enable preliminary plate fixation

Elongated multi-functional hole facilitates plate positioning and radius length adjustment.



- Innovative hole provides Intra-operative choice between compression and angular stable locking



Utility Model Patent ZL201420246052.2