



## Brief Summary

MASTERGRAFT® Resorbable Ceramic Granules are indicated only for bony voids or gaps that are not intrinsic to the stability of the bony structure. MASTERGRAFT® Resorbable Ceramic Granules are to be gently packed into bony voids or gaps of the skeletal system (e.g., the posterolateral spine, pelvis, ilium, and/or extremities). These defects may be surgically created osseous defects or osseous defects created from traumatic injury to the bone. MASTERGRAFT® Resorbable Ceramic Granules provide a bone void filler that resorbs and is replaced with bone during the healing process.



MASTERGRAFT®  
Granules

## Chemical Composition

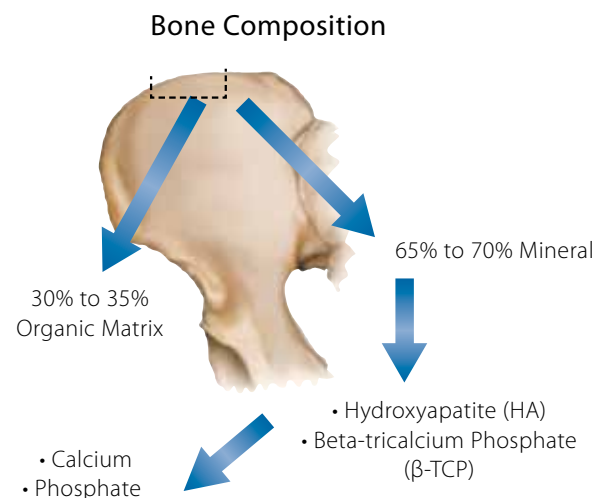
### Medical-grade Polyporous Resorbable Ceramic Granules

- » Granules are composed of:
  - 15% hydroxyapatite (HA).
  - 85% beta-tricalcium phosphate ( $\beta$ -TCP).



### Why Are the Granules Composed of 15% HA and 85% $\beta$ -TCP?

- » To provide an osteoconductive porous scaffold composed of minerals similar to those found in bone.
  - Both HA and  $\beta$ -TCP contain calcium and phosphate—the principal constituents of bone.
  - HA is the primary mineral found in bone matrix.
- » HA and  $\beta$ -TCP are the two most widely studied ceramics used for bone grafting applications, supported by more than 20 years of clinical experience.
- » The combination of HA and  $\beta$ -TCP provides an engineered combination of the desired characteristics\*:
  - Long-term stability.
  - Resorption.



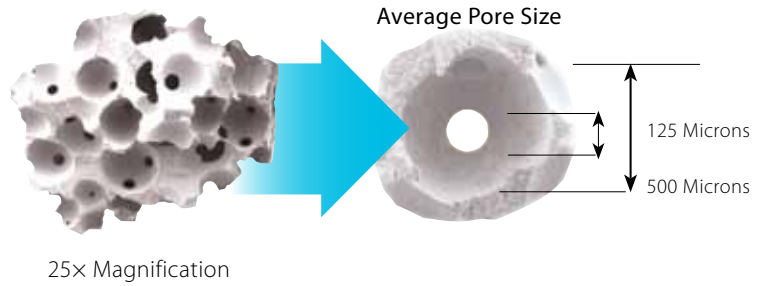
\*Data on file.

# MASTERGRAFT® Granules

## Physical Properties of Resorbable Ceramic Granules

### Features

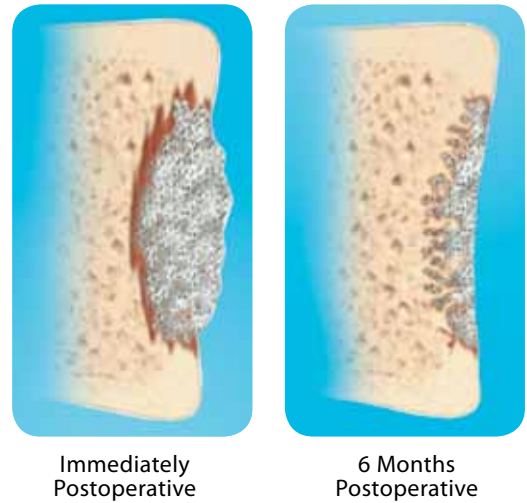
- » 80% porosity.
- » 500 micron average pore size.
- » 125 micron average interconnected diameter.



## The Resorbable Advantage

### Potential Benefits

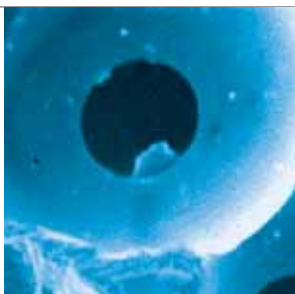
- » Aids osteointegration.\*
  - Supports the bone healing process by acting as a scaffold for new bone formation.
  - Allows creeping substitution to gradually replace the MASTERGRAFT® Granules with new host bone.
- » Supports bone growth throughout the entire defect site.\*
  - Forms strong bonds between MASTERGRAFT® Granules and natural bone surrounding the defect.
  - Residual granules are dispersed throughout the defect site and are in direct contact with woven bone and osteoid.
- » Designed to facilitate the regeneration of bone prior to complete resorption.\*
  - Allows for bony ingrowth.
  - Biphasic composition avoids complete resorption prior to bone regeneration.



## Product Ordering Information

### MASTERGRAFT® Granules

Reference		Graft Volume
7600105		5.0cc vial
7600110		10cc vial
7600115		15cc vial
7600130		30cc vial



\*Data on file.



**Medtronic**  
Spinal and Biologics Business  
Worldwide Headquarters

2600 Sofamor Danek Drive  
Memphis, TN 38132

1800 Pyramid Place  
Memphis, TN 38132

(901) 396-3133  
(800) 876-3133  
Customer Service: (800) 933-2635

For more information contact your local sales representative or Customer Service.

**Medtronic International Trading Sàrl**  
Route du Molliau 31  
1131 Tolochenaz

Tel. +41 (0)21 802 70 00  
Fax +41 (0)21 802 79 00

[www.medtronic.com](http://www.medtronic.com)